



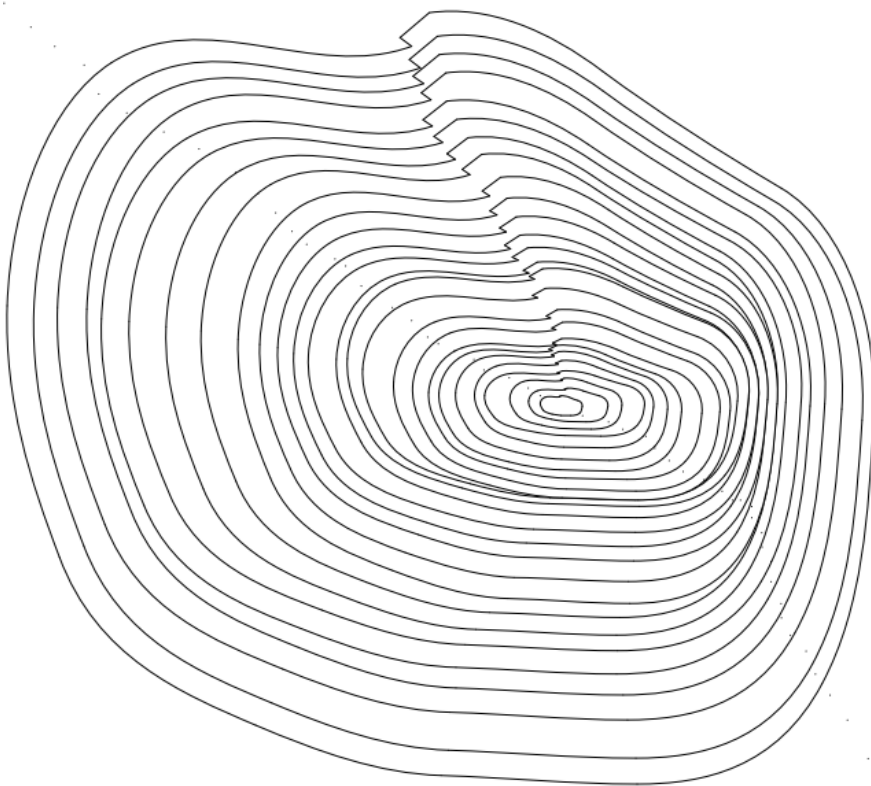
The History Tree Project

Name.....

1. Working in groups or pairs, work out how old the copper beech tree was.

Either count the rings..... and times by 8

(There is not enough space on this page to put all the rings)



Number of rings x 8

=

or calculate using the following formula and the information below:

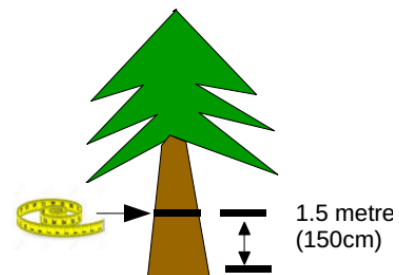
Tree measurements

The circumference (all the way round the trunk) of the tree at 1.5 metres high is 500cm

The formula for calculating the approximate age of the tree is:

Circumference divided by 2.5

The age of the tree was years old





2. Why was the tree taken down? Write down two reasons

a.

b.



3. Have you been listening?



Using the words at the bottom of the page, complete the gapped exercise below:



The North Yorkshire Moors Association is a _____. It aims to _____ and _____ the North York Moors National Park. It was set up in _____. The North Yorkshire Moors Association developed the History Tree Project as a _____ of their 25th anniversary in _____. The History Tree plaque is situated at the National Park's Moors Centre at _____. The charity has now launched a book called 'The History Tree' to outline significant local and national historical _____ and _____.

charity

1985

enhance

protect

2010

Danby

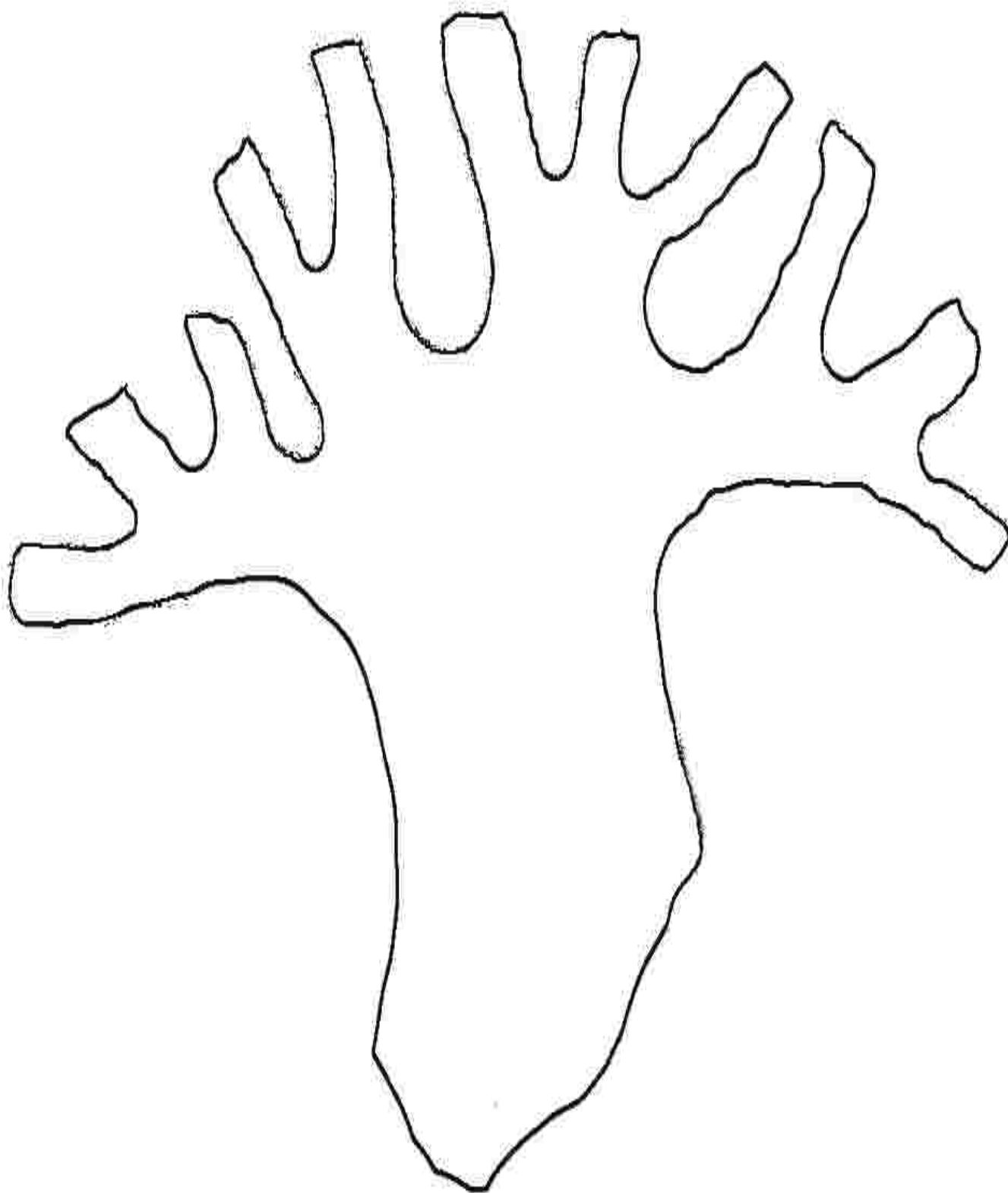
people

celebration

events

4. Make your own history tree. Using your sheet of 'events', complete your own tree below

Pick any 5-10 'events' and write them on your tree. Work your way up the tree by starting with the oldest event at the bottom...



5. In pairs/groups, read through your 'chapter' and answer the questions underneath it.



Extension task

In groups make a poster/leaflet/PowerPoint on the 'History Tree'

Things to include:

Description of the project

Information about significant people and events (from your work on the chapters)

Pictures and colour